

MONTHLY MEMBERSHIP PROGRESS REPORT

LOCATION NEPAL

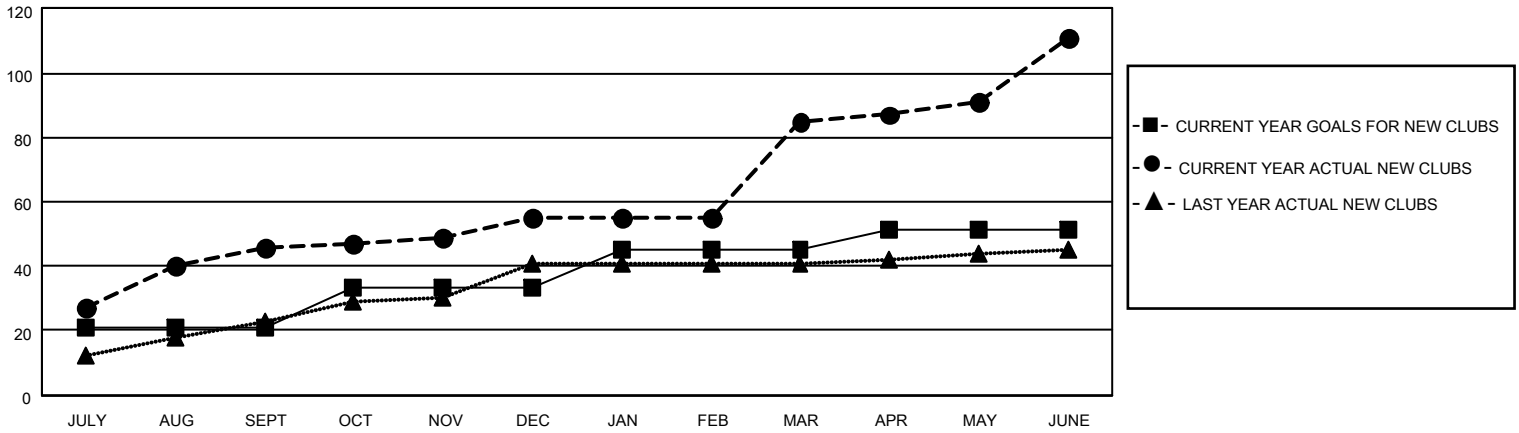
District 325A1

Results as of: 6/30/2022

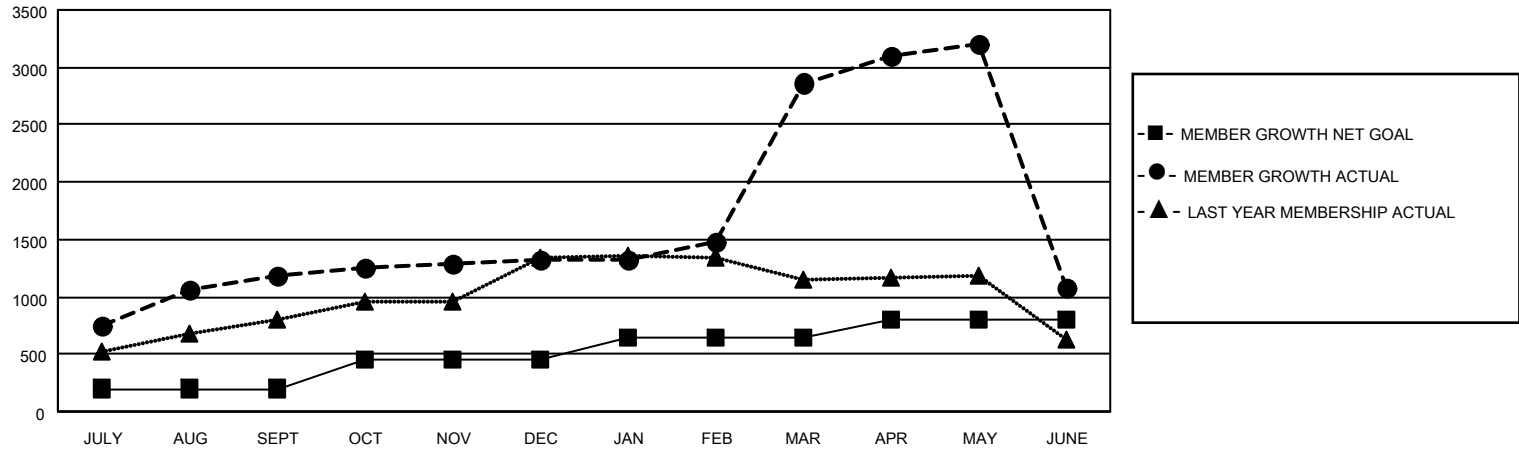
Clubs			
RESULTS FOR 2021-2022			
QUARTER	NEW CLUB GOAL	NEW CLUBS	DROPPED CLUBS
JULY/AUG/SEPT	21	46	4
OCT/NOV/DEC	12	9	1
JAN/FEB/MAR	12	30	0
APR/MAY/JUNE	6	26	5

Members			
RESULTS FOR 2021-2022			
QUARTER	MEMBER GROWTH NET GOAL	MEMBER GROWTH ACTUAL	DROPPED MEMBERS ACTUAL (including transfers)
JULY/AUG/SEPT	200	1394	192
OCT/NOV/DEC	250	339	192
JAN/FEB/MAR	200	1663	115
APR/MAY/JUNE	155	1318	3,028

GOALS AND ACTUAL NEW CLUBS CUMULATIVE



GOALS AND ACTUAL MEMBERS CUMULATIVE



DROPPED CLUBS: 10

316 CLUBS OF 418 ADDED 1 OR MORE NEW MEMBERS

GENDER DISTRIBUTION

DROPPED MEMBERS

DECEASED	9
CLUB CANCELLED	141
OTHER	3,377
TOTAL	3,527

MALE	5,476 (68.59%)
FEMALE	2,508 (31.41%)
NON BINARY	0 (0.00%)
PREFER NOT TO ANSWER	0 (0.00%)

[CLICK HERE FOR CUMULATIVE MEMBERSHIP DATA](#)

TOTAL FAMILY UNIT MEMBERS	6,214
FAMILY MEMBERS PAYING HALF DUES	4,466